

set of modular clamping equipment with hydraulic clamping unit

TC HYDRO

SET TC HYDRO - DUO

Modular clamping equipment with hydraulic clamping unit with: SUBPLATE, 2 TC VISES, SEQUENCE VALVES, CONNECTING PIPES and MANIFOLD.



Code	Type
------	------

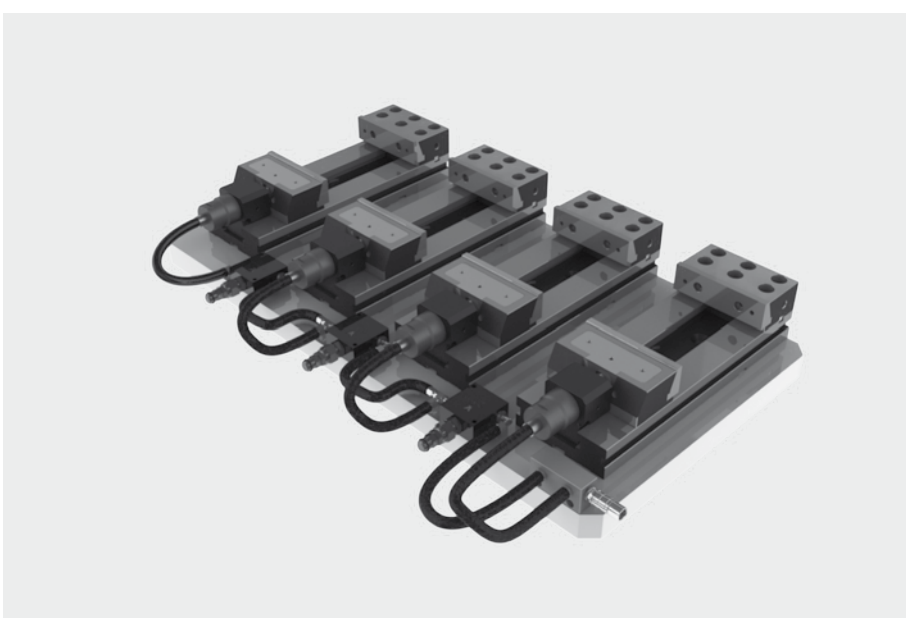
33 58 02 27 TC H DUO 150x200

33 58 02 28 TC H DUO 150x250

33 58 02 29 TC H DUO 150x300

SET TC HYDRO - TETRA

Modular clamping equipment with hydraulic clamping unit with: SUBPLATE, 4 TC VISES, SEQUENCE VALVES, CONNECTING PIPES and MANIFOLD.



Code	type
------	------

33 58 02 47 TC H TETRA 150x200

33 58 02 48 TC H TETRA 150x250

33 58 02 49 TC H TETRA 150x300

SET TC HYDRO - ESA

Modular clamping equipment with hydraulic clamping unit with: SUBPLATE, 6 TC VISES, SEQUENCE VALVES, CONNECTING PIPES and MANIFOLD.

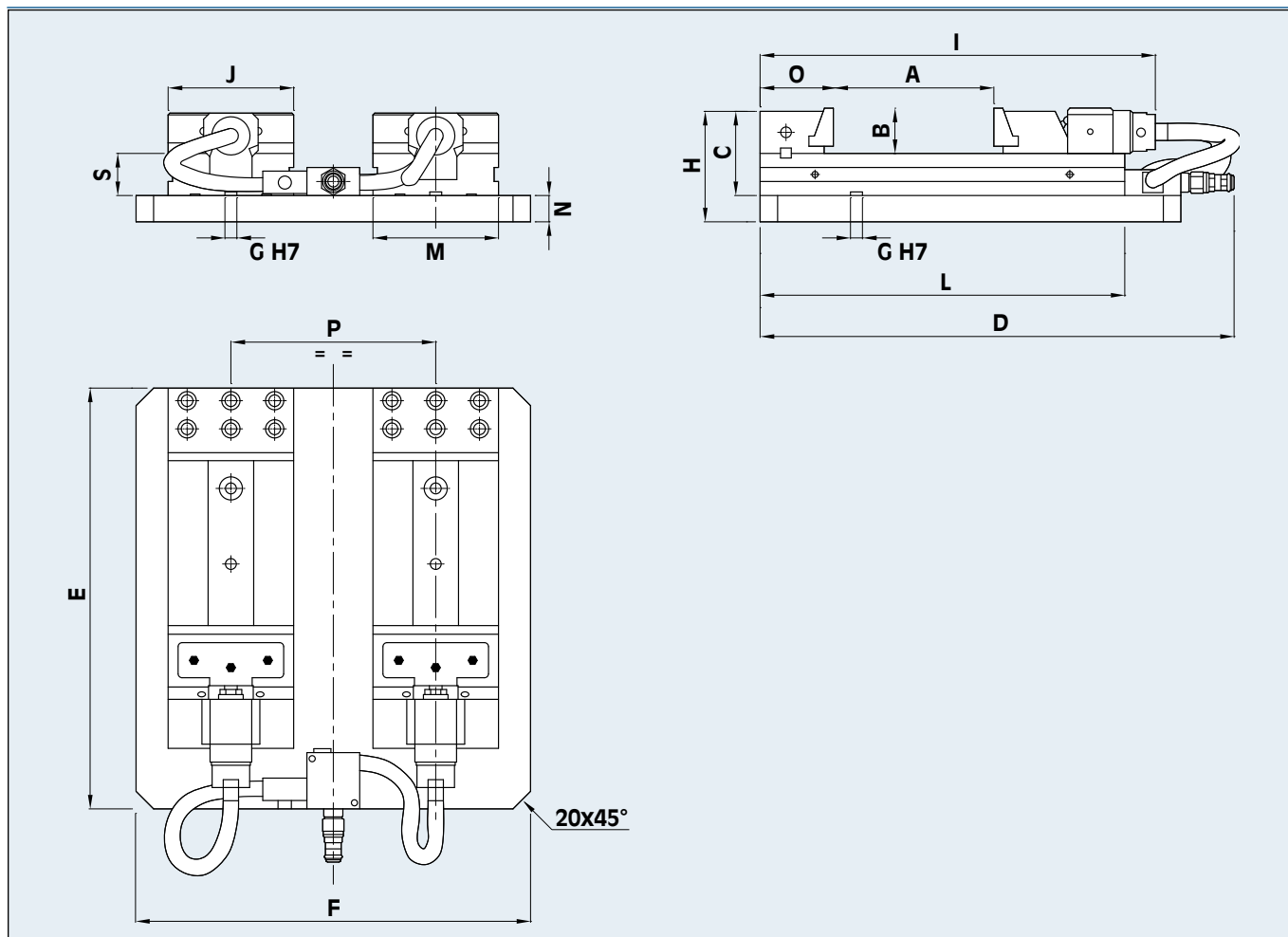


Code	Type
------	------

33 58 02 67 TC H ESA 150x200

33 58 02 68 TC H ESA 150x250

33 58 02 69 TC H ESA 150x300



Code	type	A mm	B mm	C mm	D mm	E mm	F mm	G mm	H mm	I mm	J mm	L mm	M mm	N mm	O mm	P mm	S mm	weight kg
33 58 02 27	TC H DUO 150x200	200	50	98	550	480	450	18	128	481	150	413	150	30	85	230	48	108
33 58 02 28	TC H DUO 150x250	250	50	98	600	530	450	18	128	531	150	463	150	30	85	230	48	118
33 58 02 29	TC H DUO 150x300	300	50	98	650	580	450	18	128	588	150	520	150	30	85	230	48	128
33 58 02 47	TC H TETRA 150x200	200	50	98	550	480	900	18	138	481	150	413	150	40	85	230	48	249
33 58 02 48	TC H TETRA 150x250	250	50	98	600	530	900	18	138	531	150	463	150	40	85	230	48	271
33 58 02 49	TC H TETRA 150x300	300	50	98	650	580	900	18	138	588	150	520	150	40	85	230	48	295
33 58 02 67	TC H ESA 150x200	200	50	98	550	480	1370	18	138	481	150	413	150	40	85	230	48	378
33 58 02 68	TC H ESA 150x250	250	50	98	600	530	1370	18	138	531	150	463	150	40	85	230	48	411
33 58 02 69	TC H ESA 150x300	300	50	98	650	580	1370	18	138	588	150	520	150	40	85	230	48	448



Air/oil foot pump

Code

71 66 03 05



Air/oil manual pump

Code

71 66 03 15



Pressure - gauge

Code

51 43 12 51

Working example

