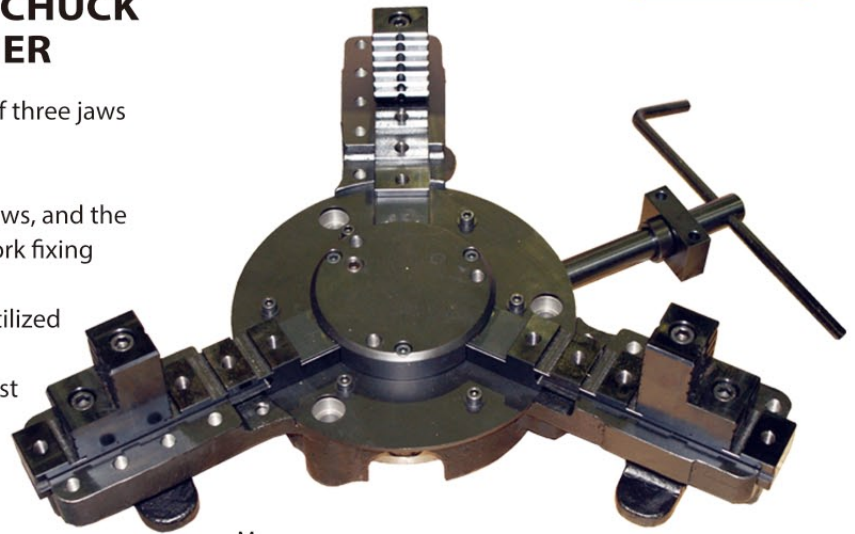


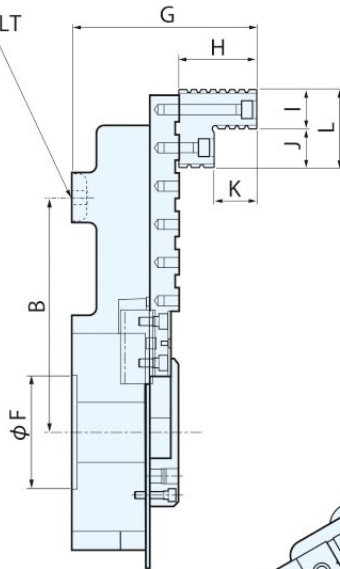
3-JAW SELF-CENTERING CHUCK FOR WELDING POSITIONER

- Easy gripping by simultaneous movement of three jaws due to rotation of the handle
- Strong gripping
- Tapped holes provided on the main body, jaws, and the guide part are used for prevention of the work fixing from shifting
- Low profile and light-weight main body is utilized for machines such as positioners
- Superior in safety and measures taken against intrusion of chips

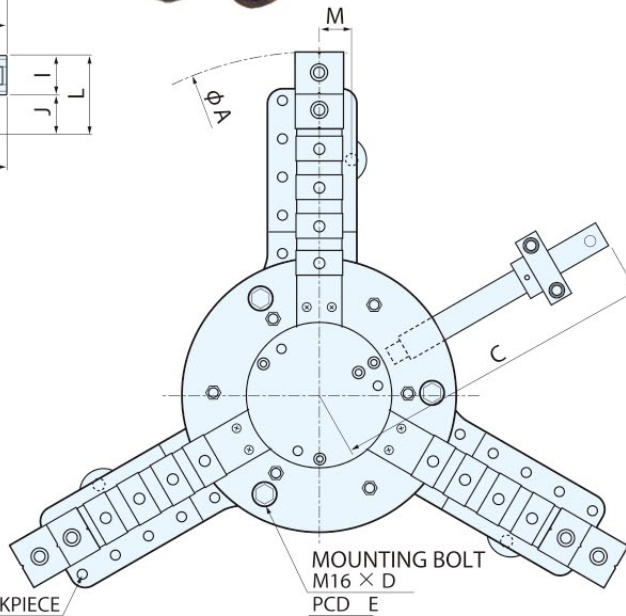


MOUNTING BOLT

M12 × 3
(WY600, 1000)
M16 × 6
(WY1500)



TAP HOLE FOR FIXING WORKPIECE

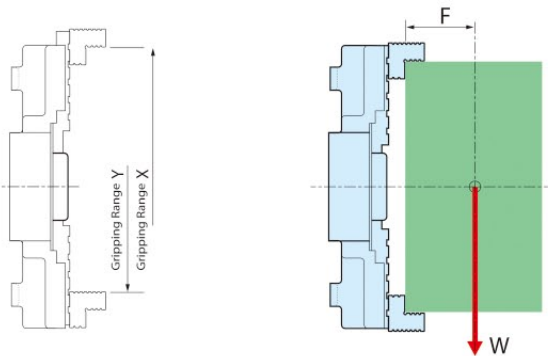


MOUNTING BOLT
M16 × D
PCD E

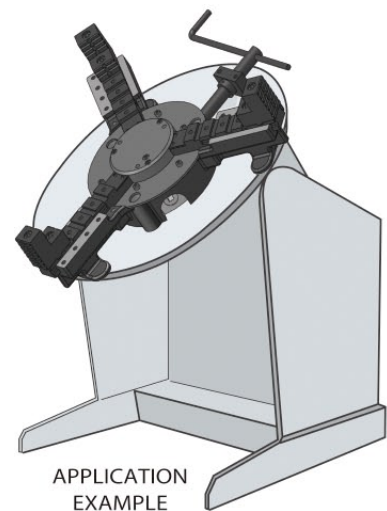
Unit (mm)

MODEL	A	B	C	D	E	F	G	H	I	J	K	L	M
WY 600	726	250	340	3	241.3	120	190.7	80	40	40	45	80	34
WY 1000	1126	430	545	3	241.3	120	190.7	80	40	40	45	80	50
WY 1500	1640	530	692	6	340.4	260	244.5	95	50	50	48	100	85

WELDING CHUCK



MODEL	Gripping Range		Gripping Force	F (mm) × W (kg)	Capacity MAX	Weight (kg)
	Y(mm)	X(mm)	kN (kgf)			
WY 600	160~560	240~640	20 (2000)	100×400	600kg	58
WY 1000	160~960	240~1040	20 (2000)	100×400	600kg	90
WY 1500	235~1435	335~1535	29 (3000)	100×700	1200kg	230

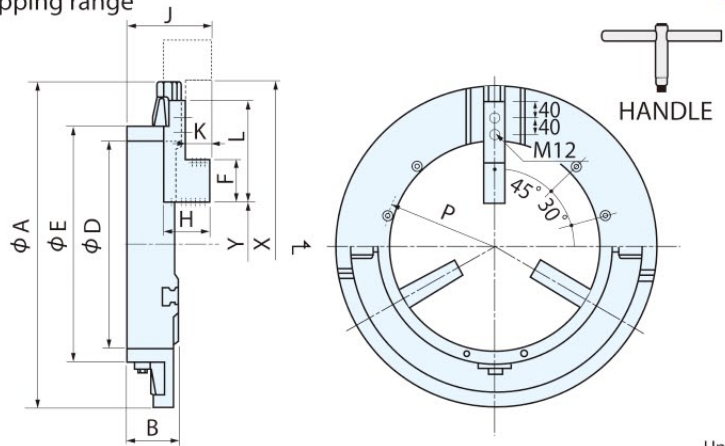
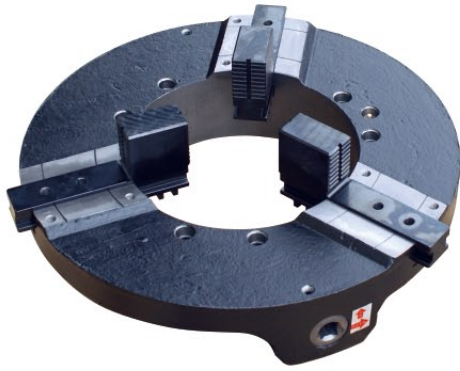


APPLICATION EXAMPLE

3-JAW SELF-CENTERING CHUCK FOR WELDING POSITIONER

- Designed to be lightweight, low profile, with a low center of gravity so as to be easily used for positioners, etc.
- Easily attach/detach a workpiece with its wide gripping range

SERIES WPS



Unit (mm)

MODEL	No.	A	B	D	E	F	H	J	K	L	φ P	Mounting Bolts	Gripping Range	
													Y	X
WPS 500	382040	500	105	270	330	70	100	170	60	200	300	6-M12×100	50~330	330~540
WPS 600	382440	600	105	365	425	70	100	170	60	200	400	6-M12×100	150~400	400~620
WPS 800	383240	800	120	540	600	100	115	195	65	250	575	6-M16×130	250~550	550~830
WPS 1000	384040	1000	135	700	760	100	115	210	65	250	735	6-M16×130	450~750	750~1050
WPS 1200	384740	1200	145	830	900	100	115	220	65	250	865	6-M16×140	600~900	900~1150

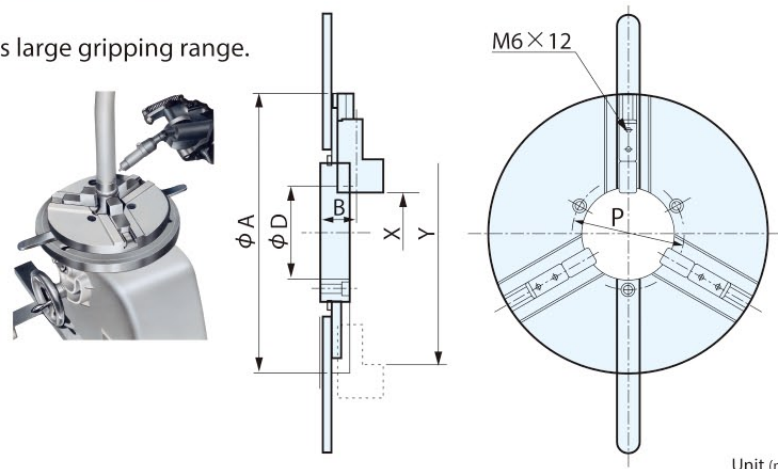
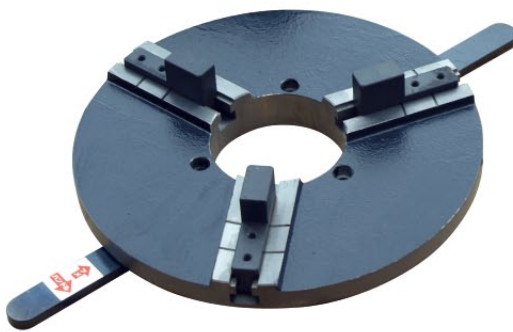
Accessories : Handle and Mounting bolts
Cast iron body

MODEL	Gripping Force kN (kgf)	F × W	Capacity MAX	Weight kg
WPS 500	20 (2000)	100mm×600kg	800 kg	57
WPS 600	20 (2000)	150mm×600kg	1000 kg	87
WPS 800	29 (3000)	200mm×600kg	1500 kg	110
WPS 1000	29 (3000)	250mm×600kg	1500 kg	180
WPS 1200	29 (3000)	300mm×600kg	2000 kg	290

3-JAW SELF-CENTERING CHUCK FOR WELDING POSITIONER

- Low profile and low center of gravity, enables large load mounting.
- Smooth rotation is enabled without burden to positioners, etc., because of its small size and lightweight.
- Workpieces detaching is also easy because of its large gripping range.

SERIES WP



Unit (mm)

MODEL	B	D	φ P	Mounting Bolts	Gripping Range		Gripping Force kN (kgf)	Weight (kg)
					X	Y		
WP 200	39	80	100	M8×35	20~130	110~210	2 (200)	6
WP 300	39	100	120	M8×40	80~190	170~280	2.5 (250)	12
WP 400	45	170	220	M10×40	120~250	250~380	3.5 (350)	24