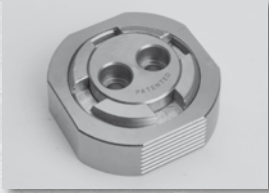
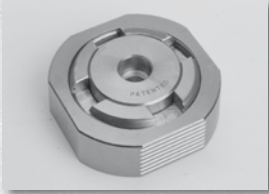




**Set**  
**CAM SYSTEM "t"**  
pag. 7.3



**CAM SYSTEM "t"**  
pag. 7.4



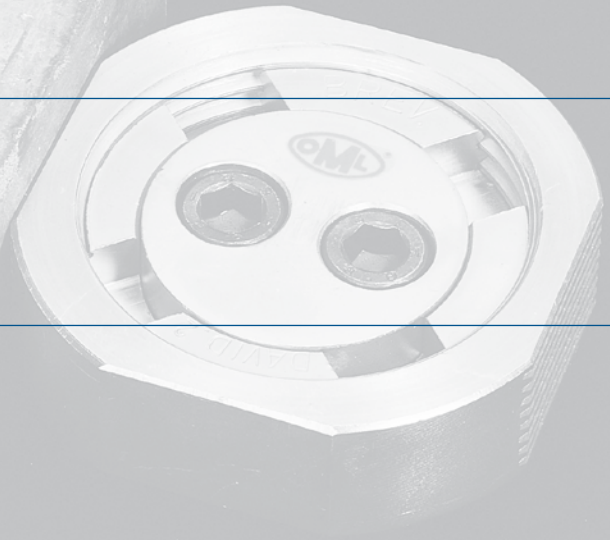
**CAM SYSTEM "g"**  
pag. 7.5



**Set**  
**CAM SYSTEM "s"**  
pag. 7.6



**CAM SYSTEM "s"**  
pag. 7.7



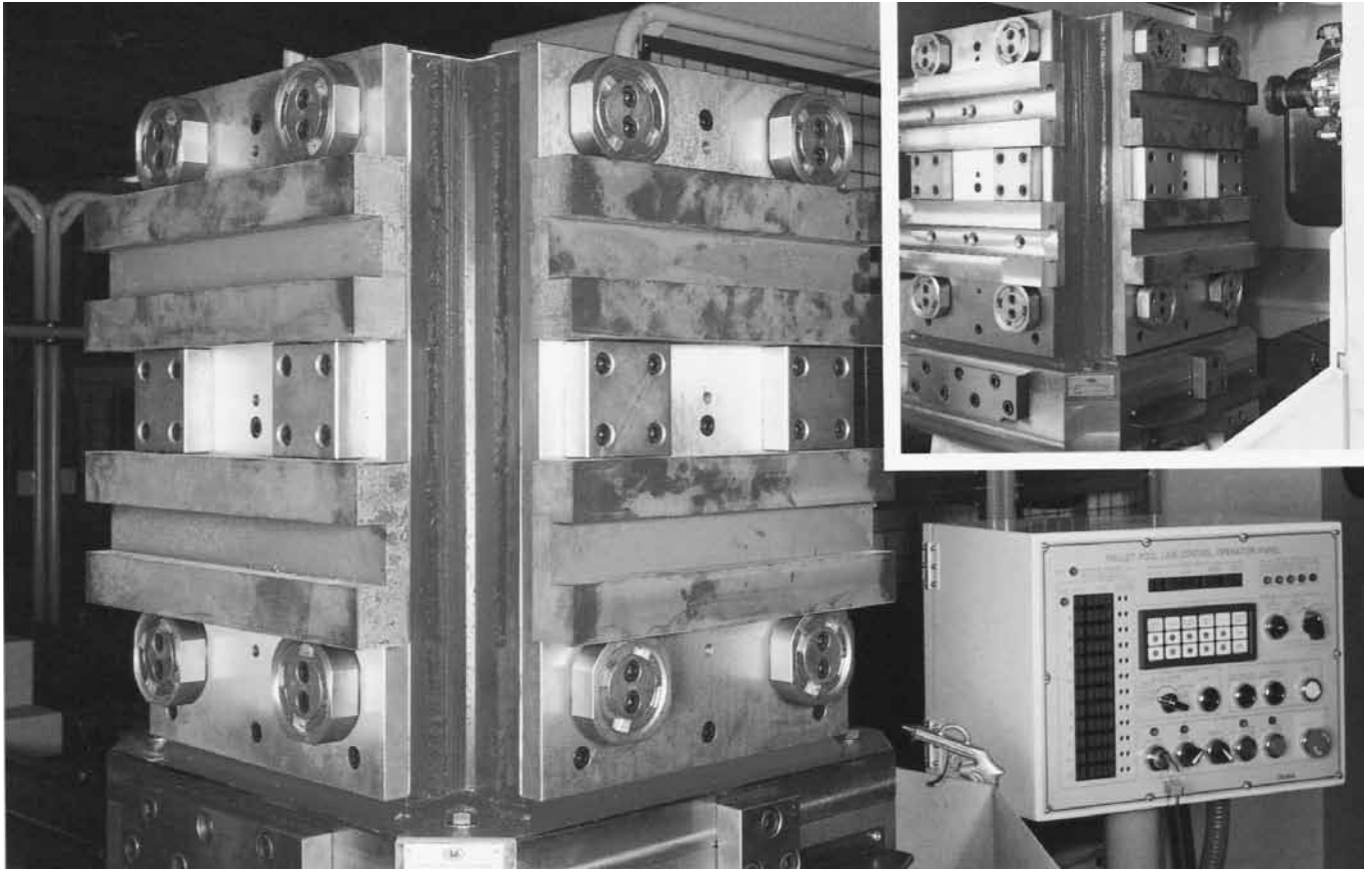
4000 kg

15°

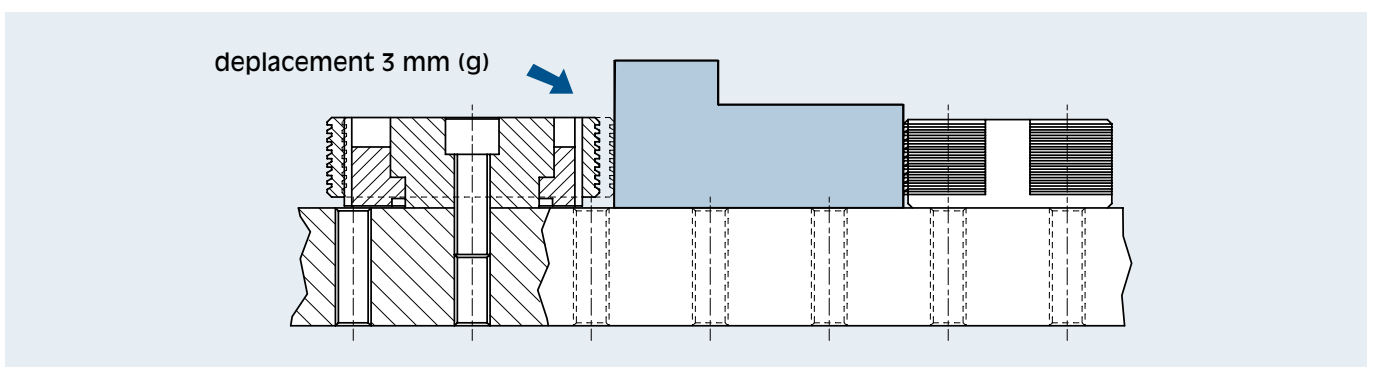
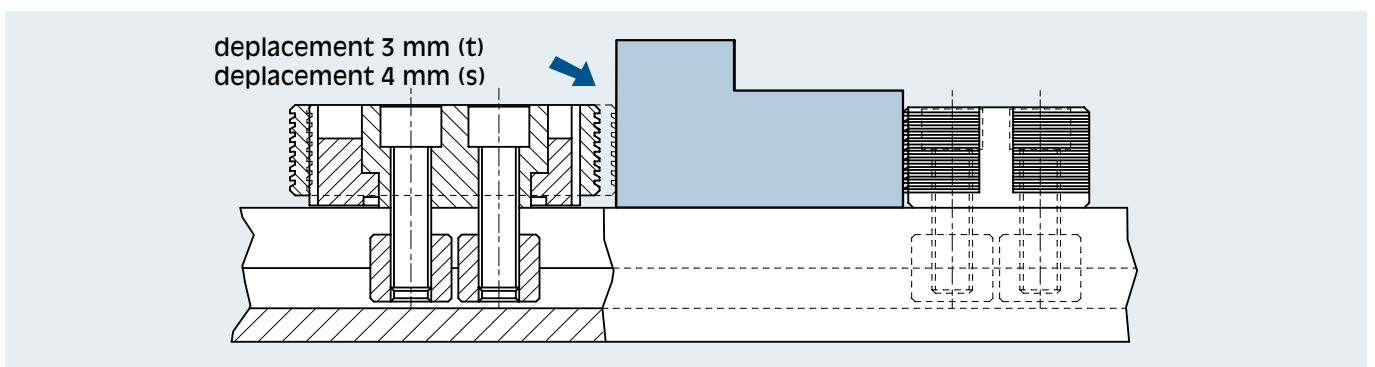


# CAM SYSTEM

eccentric self-locking  
clamping devices

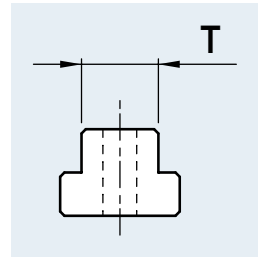


The **CAM SYSTEM** has been developed and patented to easily clamp workpieces with varied forms. This compact product enables double locking (Axial and Radial) using the eccentric and propeller principle. With a rotation of approximately 15°, contact is made with the workpiece with the complete clamping face of the CAM. The **CAM SYSTEM** clamps the workpiece with a clamping force of 4,000 kg (t) and 2,000 kg (s). **CAM SYSTEM** is supplied with both cap heads bolts and T-nuts to suit the particular machine tool cross slots. **CAM SYSTEM "g"** is supplied singly, to the customer detailed grid specification.

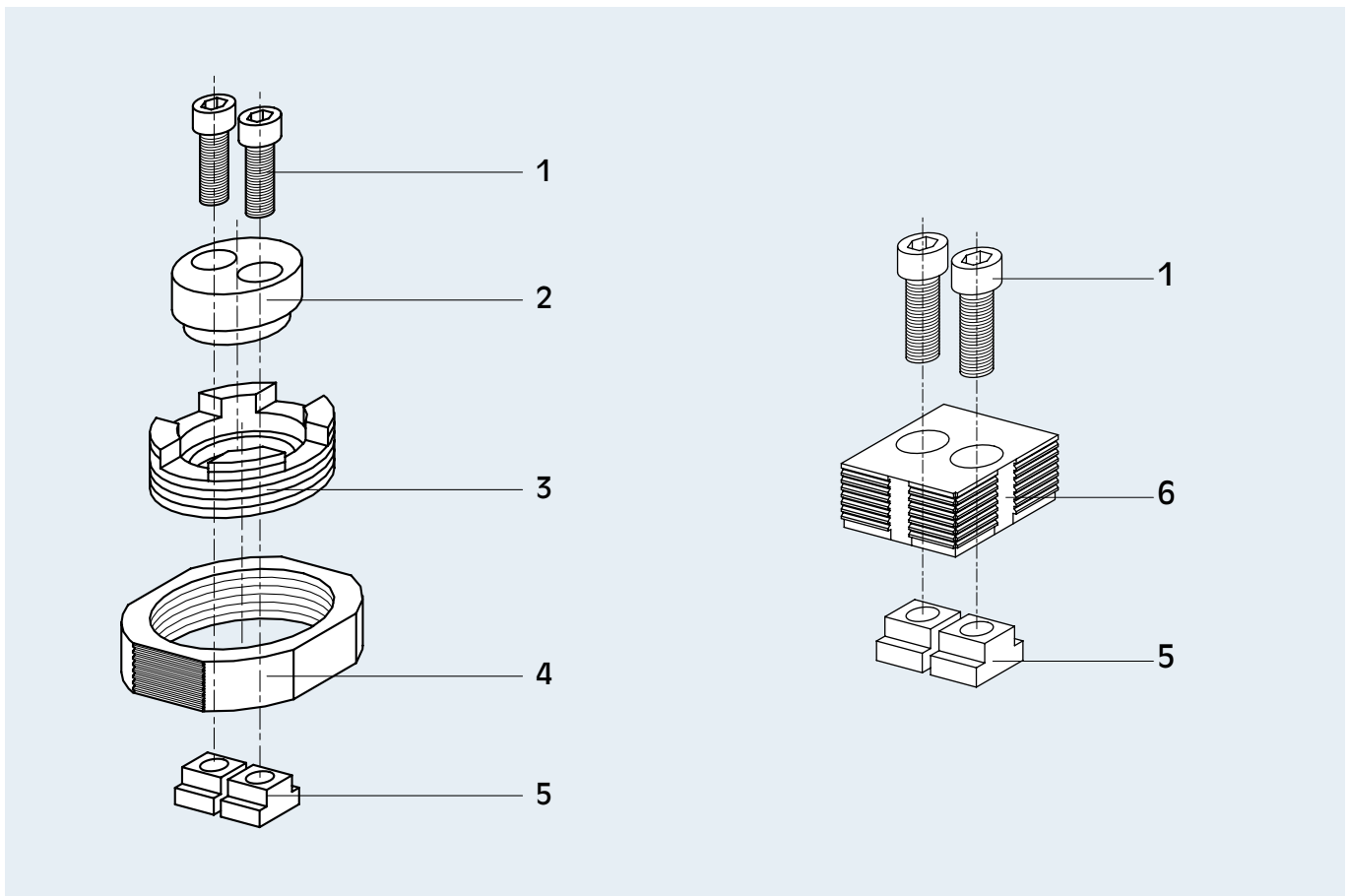




Set CAM SYSTEM "t" complete with:  
 N. 4 CAM SYSTEM "t"  
 N. 4 fixed block CAM SYSTEM 't'  
 N. 8 pair of T-nuts with screw  
 N. 1 key for CAM SYSTEM 't'  
 wooden packing case



Cod.	T mm
77 58 44 14	14
77 58 44 16	16
77 58 44 18	18
77 58 44 20	20
77 58 44 22	22

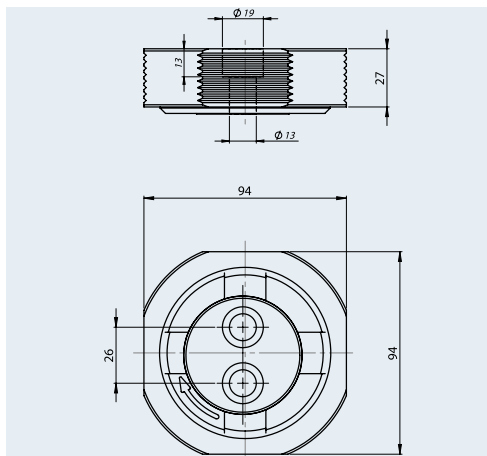


## Description

01..... Screw | 03..... Eccentric element | 05..... T-nuts  
 02..... Central element | 04..... Clamping element | 06..... Fixed block

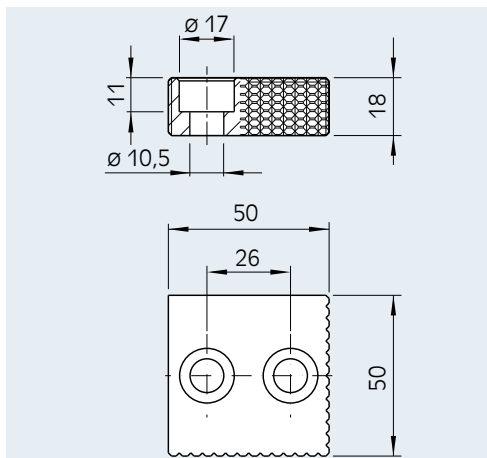
# CAM SYSTEM "t"

eccentric self-locking clamping devices



**CAM SYSTEM "t"  
single**

Cod.  
**58 44 50 10**



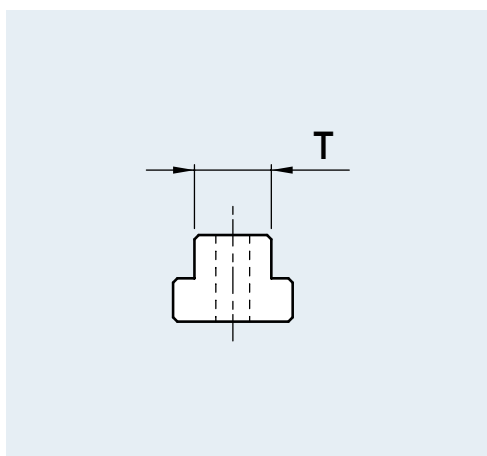
**Fixed block  
CAM SYSTEM "t"**

Cod.  
**58 44 04 00**



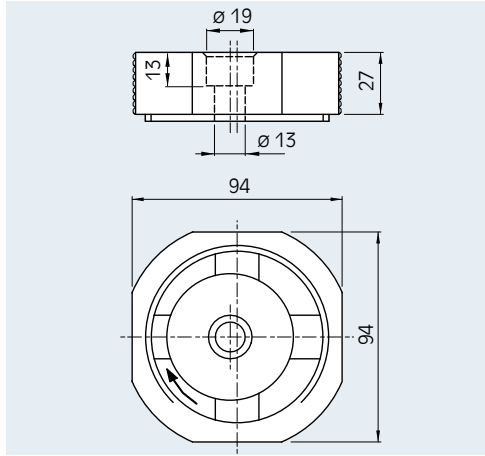
**Key for  
CAM SYSTEM "t"**

Cod.  
**58 44 08 00**



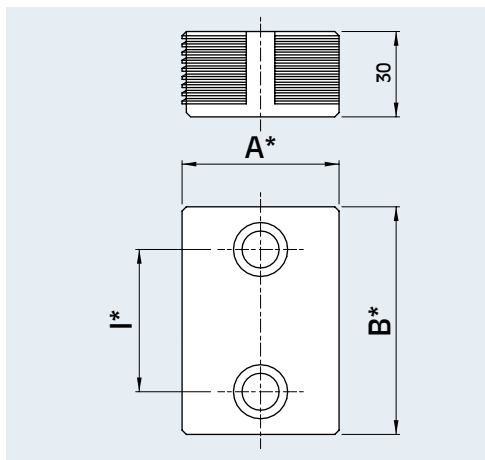
**Pair of T-nuts  
with screw  
CAM SYSTEM "t"**

Cod.	T mm
<b>58 44 25 93</b>	14
<b>58 44 25 94</b>	16
<b>58 44 25 95</b>	18
<b>58 44 25 96</b>	20
<b>58 44 25 97</b>	22



**CAM SYSTEM "g" single**

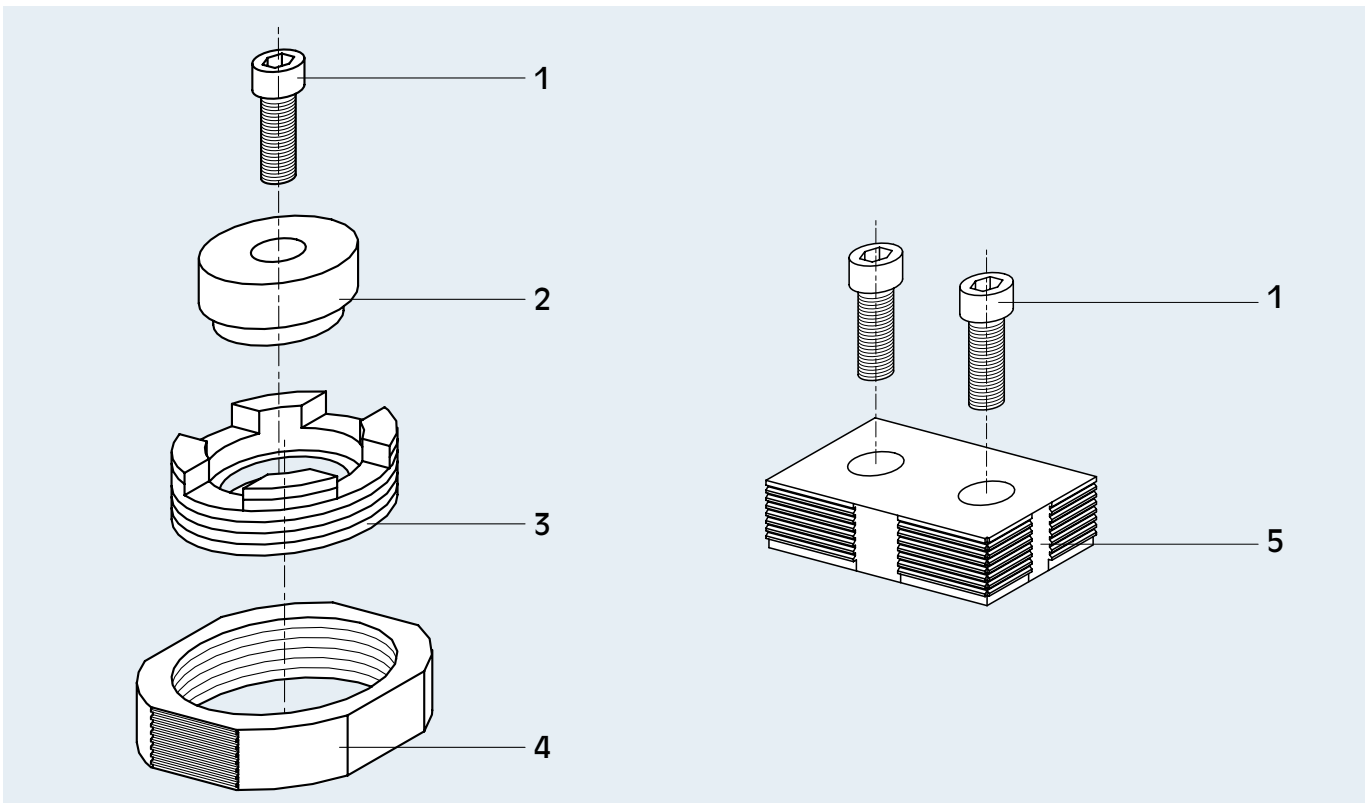
Cod.  
58 44 50 20



**Fixed block CAM SYSTEM "g"**

dimensions A,B,I must be specified when ordering

Cod.  
58 44 14 00



## Description

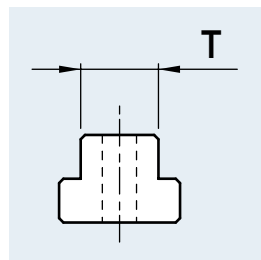
- |                        |                          |                    |
|------------------------|--------------------------|--------------------|
| 01.....Screw           | 03.....Eccentric element | 05.....Fixed block |
| 02.....central element | 04.....Clamping element  |                    |

# CAM SYSTEM "S"

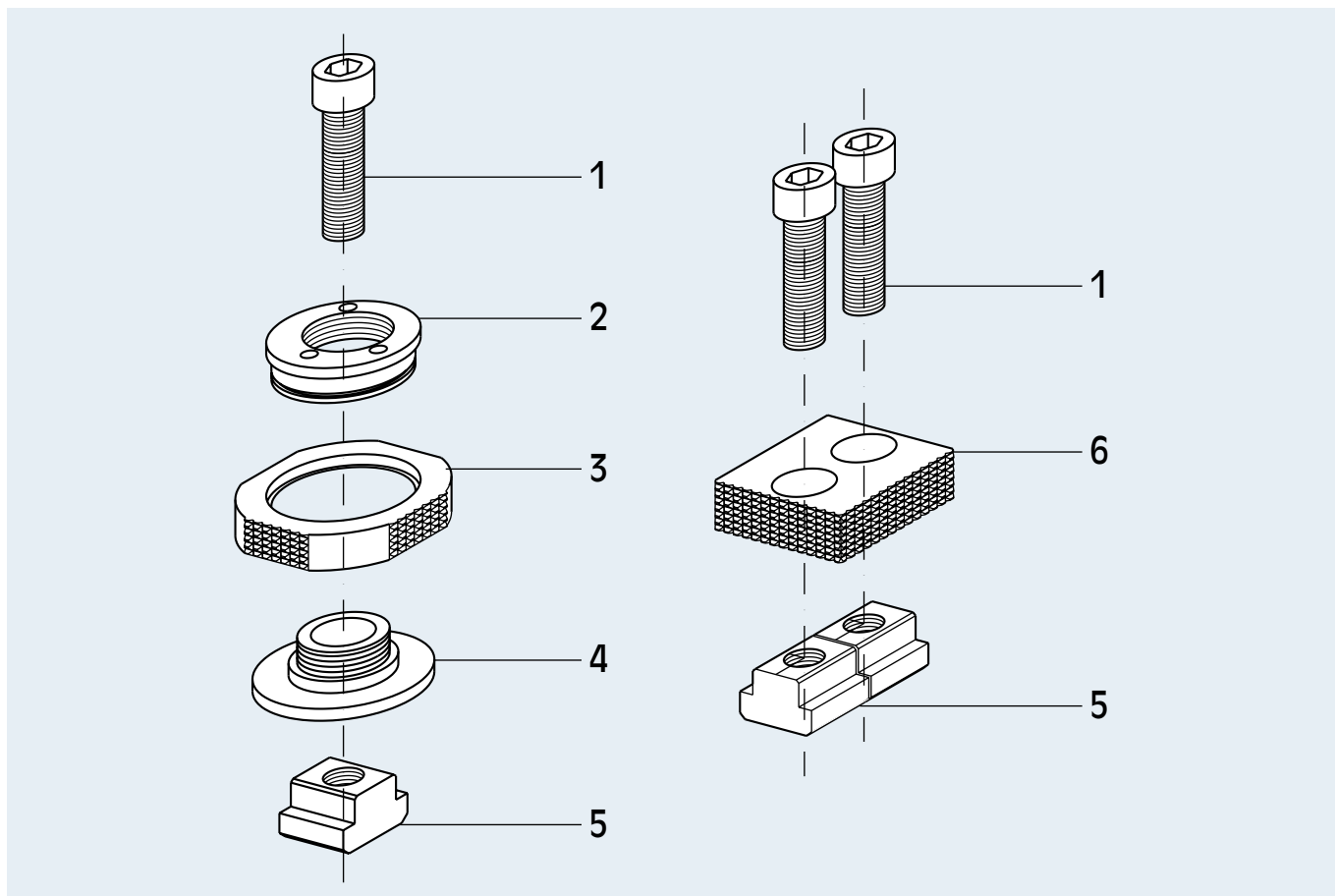
eccentric self-locking clamping devices



Set Cam SYSTEM "s" complete with:  
 N. 4 CAM SYSTEM "s"  
 N. 4 fixed block CAM SYSTEM "s"  
 N. 6 pair of T-nuts with screw  
 N. 1 Key for CAM SYSTEM "s"  
 wooden packing case

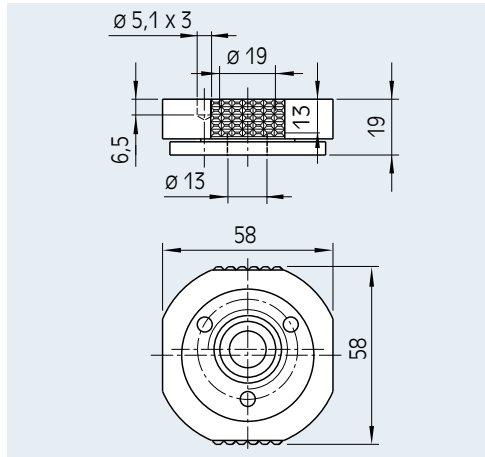


Cod.	T mm
77 58 43 14	14
77 58 43 16	16
77 58 43 18	18
77 58 43 20	20
77 58 43 22	22



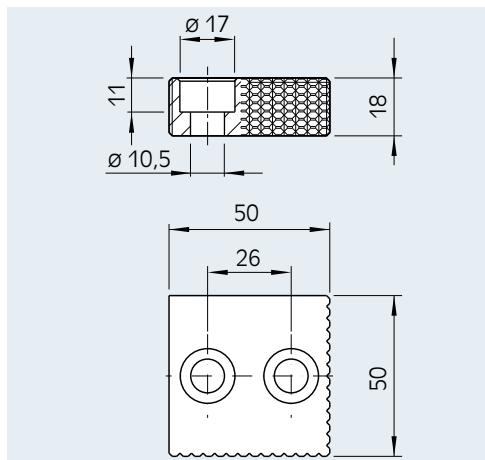
## Description

01.....Screw | 03.....Clamping element | 05.....TT-nuts  
 02.....Eccentric element | 04.....Central element | 06.....Fixed block



**CAM SYSTEM "s"**  
single

Cod.  
58 43 50 00



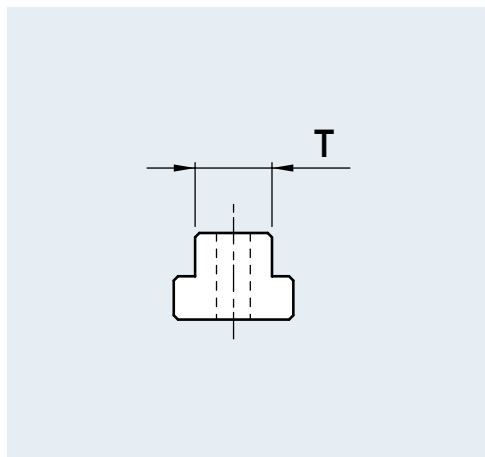
**Fixed block**  
**CAM SYSTEM "s"**

Cod.  
58 43 04 00



**Key for**  
**CAM SYSTEM "s"**

Cod.  
58 43 08 00



**Pair of T-nuts**  
**with screw**  
**CAM SYSTEM "s"**

Cod.	T mm
58 43 25 93	14
58 43 25 94	16
58 43 25 95	18
58 43 25 96	20
58 43 25 97	22

# CAM SYSTEM

## eccentric self-locking clamping devices

